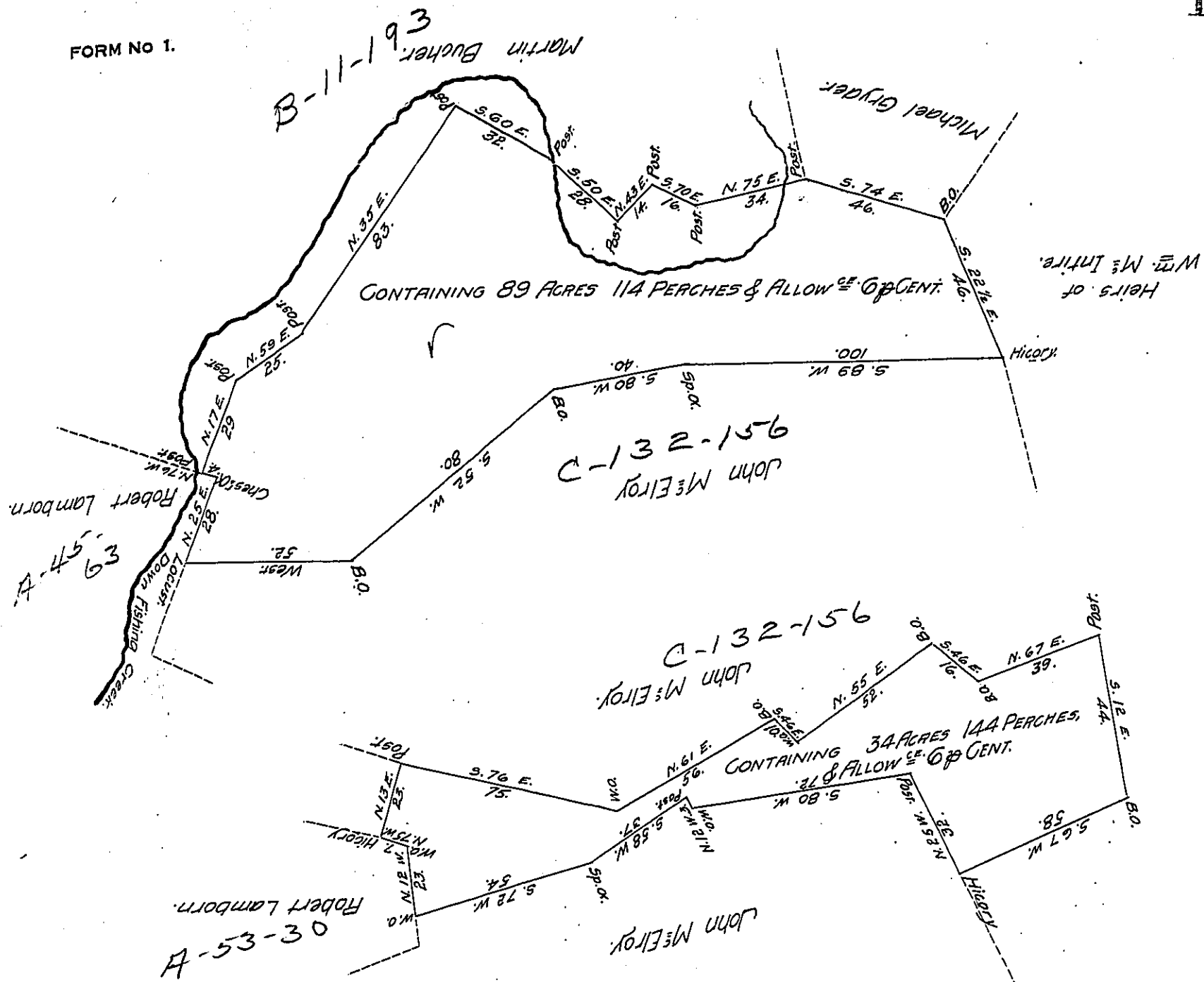


FORM NO 1.



A Draught of Two Tracts of Land situate in Drumore Township Lancaster County. Containing as above represented. Surveyed on one Application, No. 1302, dated the 2nd of January, 1766, to John M^{rs} Elroy. Surveyed the 23rd of August, 1809, by Joshua Scott, authorized by me,
 Jacob Hibshman, D.S.

To Andrew Porter, Esq^t,
 Surveyor General.

IN TESTIMONY that the above is a copy of the original remaining on file in the Department of Internal Affairs of Pennsylvania, made conformably to an Act of Assembly approved the 16th day of February, 1833, I have hereunto set my Hand and caused the Seal of said Department to be affixed at Harrisburg, this First day of June, 1908.

Henry Howell
 Secretary of Internal Affairs.